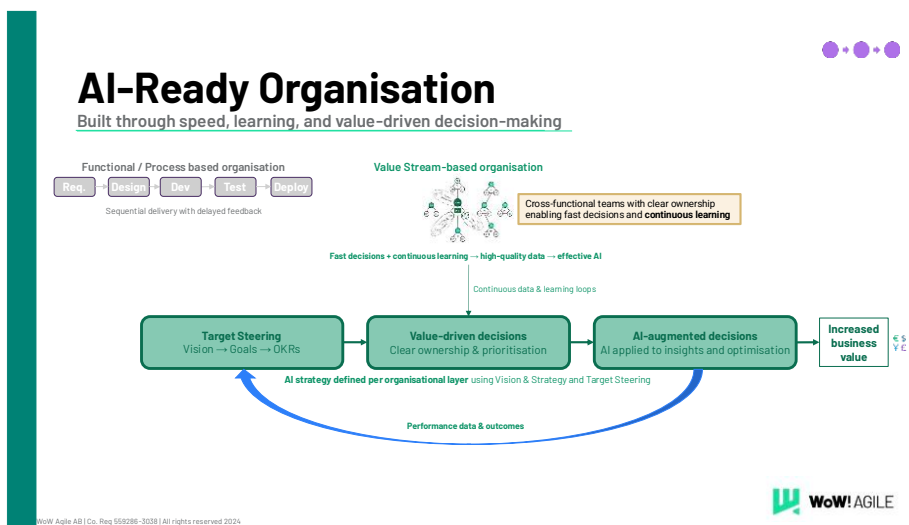




WoW! AGILE

Description – The WoW! Agile AI-Ready Organisation model

From AI experimentation to scalable business impact





The WoW! Agile AI-Ready Organisation model

From AI experimentation to scalable business impact

AI creates measurable business impact when organisations can prioritise, integrate, govern, and scale AI as part of normal execution.

Executive Summary

Many organisations are already investing in AI, but struggle to turn experimentation into measurable business value.

The challenge is rarely the technology itself. It is that the organisation is not designed to prioritise, test, integrate, govern, and scale AI in a structured way.

The WoW! Agile AI-Ready Organisation model helps organisations create the conditions required for successful AI adoption. It connects AI initiatives to strategy, embeds AI into real workflows, and establishes fast learning loops so that AI can improve decision-making, automate repetitive work, and strengthen business outcomes.

AI becomes part of how the organisation learns, decides, and improves.

It is part of the **Enablement layer** of the WoW! Agile Toolbox—supporting the organisation in becoming faster, more adaptive, and better prepared to realise value from AI. The model builds on the Toolbox logic that execution must work as a connected flow from strategy to measurable results, supported by Vision & Strategy, Target Steering, Value Streams, VDR, LPM, QuickStart, and Framework Flexibility.

Outcomes

When applied effectively, the AI-Ready Organisation model delivers:

- Faster AI adoption
 - Clearer prioritisation of AI-enabled capabilities
 - Stronger alignment between AI and business strategy
 - Better decision-making through data and predictive insights
 - Automation of repetitive and low-value work
 - Faster feedback loops and continuous learning
 - Improved collaboration across business and technology
 - Stronger scalability of successful AI solutions
-



What it enables

The AI-Ready Organisation model enables organisations to:

- Align AI initiatives with business strategy and measurable outcomes
- Prioritise high-impact AI opportunities
- Create fast experimentation and learning cycles
- Integrate AI into existing workflows and decision-making
- Improve collaboration between business, technology, and delivery teams
- Automate repetitive work and free capacity for higher-value activities
- Strengthen data-driven decision-making
- Scale successful AI solutions across the organisation

The outcome is a scalable organisational capability for applying AI where it creates measurable business impact.

What challenges it addresses

Many organisations want to use AI but struggle to implement it effectively.

Common challenges include:

- AI-driven operational improvements are fragmented across teams and functions
- Experiments are not connected to strategic priorities
- Governance is unclear or slows down progress
- Business and technology do not collaborate closely enough
- AI is treated as a separate initiative rather than part of normal workflows
- Successful pilots are difficult to scale
- Outcomes are not measured clearly
- Data, feedback, and learning loops are too weak to support continuous improvement

The result is often high activity but limited measurable impact.

The AI-Ready Organisation model

The WoW! Agile AI-Ready Organisation model is not an AI technology framework.

It is an organisational design model for integrating AI into execution, decision-making, and continuous improvement.

It helps leadership answer critical questions:



- Where can AI create real business value?
- Which AI-supported workflows should be prioritised?
- How do we move from experimentation to implementation?
- How should business and technology collaborate?
- How do we integrate AI into daily work?
- How do we measure whether AI creates the intended outcomes?

The model is built on the principle that Agile provides the learning system, while AI adds intelligence, speed, and automation. Agile ways of working create the conditions for testing, learning, and improving AI solutions, while AI strengthens decision-making, feedback loops, and operational efficiency.

How it fits in the WoW! Agile Toolbox

AI-Ready Organisation is part of the **Enablement layer** of the WoW! Agile Toolbox.

It builds on:

- Vision & Strategy – defining where AI should support strategic direction
- Target Steering – aligning AI objectives and priorities across organisational levels
- Value Streams – identifying where AI can improve flow, customer value, and operational performance
- VDR – prioritising AI-related work based on measurable value
- Lean Portfolio Management – governing AI investments and strategic initiatives
- QuickStart – enabling rapid implementation in real work contexts

Without clear direction, ownership, prioritisation, and feedback loops, AI adoption risk becoming disconnected experiments. With the WoW! Agile Toolbox in place, AI becomes part of how the organisation executes, learns, and improves.

How it works

The model establishes organisational readiness for AI through a structured sequence:

- Clarify the strategic ambition for AI
- Identify where AI can improve business value, flow, decisions, or efficiency
- Connect AI opportunities to objectives, value streams, and outcomes
- Prioritise AI use cases based on value, feasibility, risk, and learning potential
- Define ownership across business, technology, and delivery
- Establish fast experimentation and feedback loops



- Integrate successful AI solutions into real workflows
- Measure outcomes and continuously adjust based on learning

This creates the organisational structure required to move from AI ideas to scalable business impact.

Typical use cases

The model is used when:

- AI is already being used, but without clear direction or coordination
 - AI pilots are not scaling into operational value
 - Leadership needs a structured way to prioritise AI initiatives
 - Business and technology collaboration around AI needs improvement
 - The organisation wants to integrate AI into daily work and decision-making
 - AI investments need clearer governance and measurable outcomes
 - The organisation wants to build long-term AI readiness, not just run experiments
-

Closing positioning

AI readiness is not achieved by introducing AI tools alone.

It requires an organisation that can decide fast, learn continuously, prioritise based on value, and integrate new capabilities into real work.

The WoW! Agile AI-Ready Organisation model helps organisations create that capability. By connecting AI to strategy, value streams, decision-making, and measurable outcomes, it turns AI from isolated experimentation into a scalable organisational capability for business value creation.
