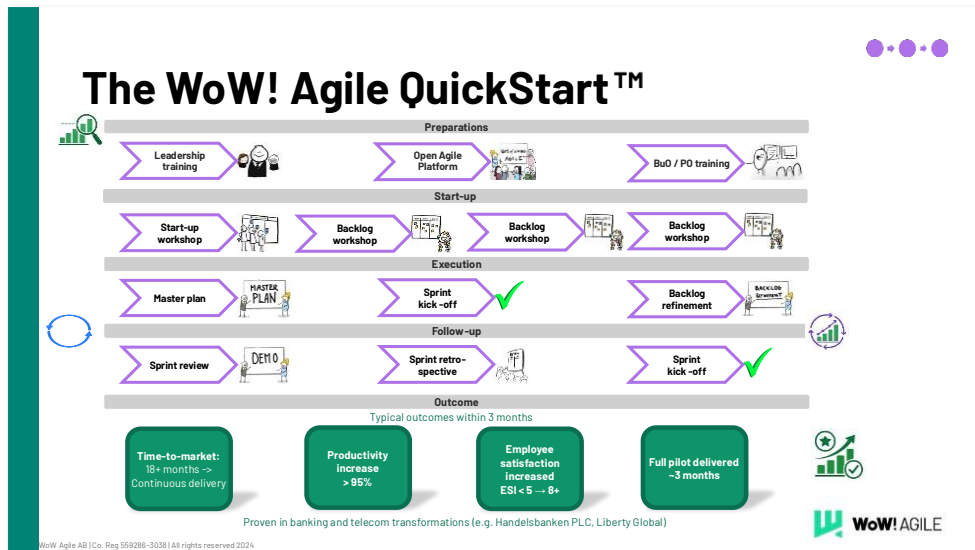




WoW! AGILE

Description – The WoW! Agile QuickStart™ model

From transformation delay to immediate execution capability





The WoW! Agile QuickStart™ model

From transformation delay to immediate execution capability

A practical model for rapidly establishing aligned execution, measurable outcomes, and operational momentum through real organisational work.

Executive Summary

Many organisations understand that they need to improve execution, agility, decision-making, or collaboration—but struggle to get started effectively.

Traditional transformation programmes are often too slow, too theoretical, and too disconnected from operational realities. Months are spent planning frameworks, governance structures, and training initiatives before measurable value is created.

The WoW! Agile QuickStart™ model addresses this challenge.

QuickStart is a practical acceleration model designed to establish execution capability rapidly through real organisational work. Instead of starting with large-scale transformation planning, QuickStart focuses on creating immediate alignment, measurable progress, and operational momentum within weeks.

The model has been proven in large-scale banking and telecommunications transformations, where organisations established continuous delivery within months and achieved significant improvements in predictability, engagement, and productivity.

It enables organisations to move directly from discussion and ambition into coordinated execution—while simultaneously building understanding, capability, and confidence across leadership and teams.

Execution capability is established within weeks.

QuickStart is the **Enablement layer** of the WoW! Agile Toolbox. It provides the practical starting point that activates the broader execution system and enables organisations to begin delivering value quickly and predictably.

Outcomes

When applied effectively, QuickStart delivers:

- Rapid establishment of execution capability
- Faster alignment between leadership, teams, and priorities
- Early measurable business outcomes within weeks
- Reduced uncertainty during transformation or strategic change



- Improved decision-making and organisational focus
 - Faster learning cycles and increased adaptability
 - Stronger engagement through practical participation
 - A scalable foundation for broader organisational development
 - Predictable and continuous delivery capability
 - Faster time-to-market and improved execution transparency
-

What it enables

The QuickStart model enables organisations to:

- Start execution rapidly without waiting for large transformation programmes
- Translate strategic intent into practical action immediately
- Build momentum through visible and measurable progress
- Learn by doing rather than relying primarily on theory
- Establish aligned ways of working across teams and leadership
- Create transparent and prioritised execution structures
- Establish predictable delivery cadence and continuous feedback loops
- Identify execution bottlenecks and improvement areas early
- Create confidence in change through practical results
- Accelerate adoption of the broader WoW! Agile Toolbox

The focus is not on introducing a framework.

The focus is on rapidly establishing a sustainable execution capability that delivers measurable business outcomes.

What challenges it addresses

Many organisations experience:

- Transformation initiatives that take too long before delivering results
- Excessive focus on methodology instead of outcomes
- Unclear starting points for change initiatives
- Leadership uncertainty regarding how to begin execution improvement
- Fragmented initiatives without shared direction
- Long planning cycles before operational impact is visible
- Low engagement caused by abstract or theoretical transformation work
- Difficulty scaling improvements beyond isolated teams



The result is often delayed value creation, reduced confidence, transformation fatigue, and loss of organisational momentum.

The QuickStart Model

The WoW! Agile QuickStart™ model is a practical and execution-focused acceleration approach.

It is designed to establish execution capability rapidly by applying the WoW! Agile principles directly in real organisational contexts from day one.

Rather than separating strategy, learning, governance, and execution into sequential phases, QuickStart combines them into a practical and iterative execution capability where organisations improve while delivering real outcomes.

The model helps organisations answer critical questions:

- Where should we start?
- How do we create momentum quickly?
- How do we align execution without slowing down?
- How do we demonstrate measurable progress early?
- How do we scale improvement beyond individual teams?

QuickStart creates an immediate bridge between strategic intent and operational execution.

How it fits in the WoW! Agile Toolbox

QuickStart establishes the **Enablement layer** of the WoW! Agile Toolbox.

It accelerates adoption and practical application of:

- Vision & Strategy – by clarifying direction through execution
- Target Steering – by creating aligned objectives and priorities early
- Value Streams – by identifying how value flows through real work
- Value-driven Requirements & Delivery (VDR) – by establishing value-focused decision-making from the start
- Lean Portfolio Management – by creating visibility into priorities, capacity, and investment needs

QuickStart is often the practical entry point into the WoW! Agile Toolbox.

Without a rapid and practical starting mechanism, organisations risk spending excessive time designing change rather than executing it.



How it works

The QuickStart model establishes execution capability through a structured but highly practical sequence.

It typically includes:

- Rapid assessment of current execution challenges and opportunities
- Leadership alignment around priorities, objectives, and desired outcomes
- Identification of a focused execution area or strategic initiative
- Creation of transparent and prioritised backlogs
- Establishment of measurable objectives and delivery focus
- Introduction of practical delivery cadence and planning horizons
- Immediate application of aligned ways of working through real delivery
- Continuous reviews, retrospectives, and measurable learning loops
- Ongoing prioritisation and adjustment based on business outcomes and organisational learning

The model is intentionally designed to minimise delay between decision and action.

Learning, alignment, execution, and improvement happen simultaneously—not sequentially.

Typical use cases

QuickStart is used when:

- Organisations need to improve execution rapidly
 - Transformation initiatives have stalled or lost momentum
 - Leadership wants measurable progress within weeks
 - Teams need alignment around priorities and outcomes
 - Strategic initiatives require faster operational activation
 - Organisations need to improve predictability and delivery transparency
 - Organisations want to move from theory to practical execution
 - Agile or transformation efforts need a more business-focused starting point
 - The organisation wants to establish an execution foundation before scaling broader change
-

Closing positioning

QuickStart is where transformation becomes execution.



By rapidly establishing alignment, measurable progress, predictable delivery, and practical ways of working through real organisational delivery, the WoW! Agile QuickStart™ model enables organisations to create momentum early, reduce uncertainty, and build a scalable foundation for long-term execution capability.

It ensures that change is not delayed by excessive preparation—but accelerated through focused action, continuous learning, and measurable business results from the very beginning.
