



WoW! AGILE

Description - The WoW! Agile Toolbox

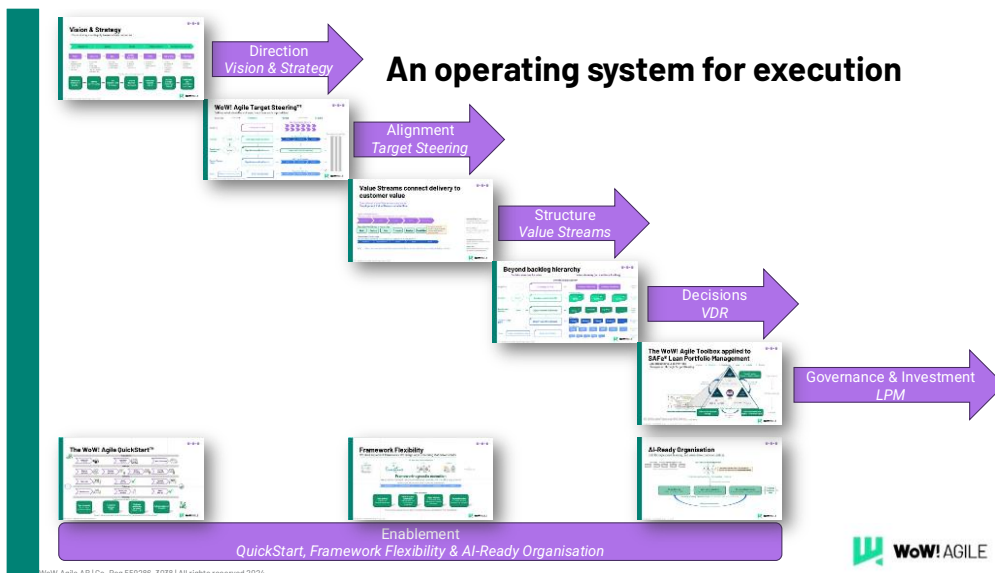




Table of Contents

The WoW! Agile Toolbox.....	3
An operating system for execution	3
Executive summary	3
Typical challenges we see.....	3
The execution problem	4
The solution: An operating system for execution	4
How the system works	5
The Toolbox components.....	5
Vision & Strategy	5
Target Steering	6
Value Streams.....	6
Value-driven Requirements & Delivery (VDR).....	6
Lean Portfolio Management (LPM)	7
QuickStart.....	7
Framework Flexibility	8
AI-ready organisation	8
Typical implementation approach	9
Why leaders choose the WoW! Agile Toolbox.....	9
What this could look like in practice	9
Next step	10



The WoW! Agile Toolbox

An operating system for execution

For complex organisations

Executive summary

Most organisations do not fail because of poor strategy.

They fail because strategy never becomes coordinated execution.

Despite clear goals and significant investments, organisations struggle to:

- Translate strategy into actionable priorities
- Align teams and initiatives
- Make fast, value-driven decisions
- Deliver measurable results consistently

The WoW! Agile Toolbox addresses this challenge.

Within weeks, organisations typically experience faster decision-making, clearer priorities, and improved alignment between strategy and execution.

It is an **operating system for execution** – a structured, framework-agnostic approach that connects strategy, prioritisation, delivery, and governance into one coherent system. The Toolbox is not a theoretical model—it is applied directly in real work, delivering measurable results within weeks.

Rather than introducing another methodology, the Toolbox enables organisations to:

- Align the entire organisation around shared objectives
- Organise work around value delivery
- Make faster decisions without overloading leadership
- Deliver measurable outcomes within weeks—not months

The result is faster execution, clearer priorities, stronger governance, and a significantly improved ability to turn strategy into measurable business outcomes.

Typical challenges we see

Many organisations we work with experience:

- AI is used across the organisation—but without a clear strategy or structure
- Different teams move in different directions, with no shared priorities



- Decision-making is centralised, slowing down execution and creating bottlenecks
- Initiatives compete rather than reinforce each other

These challenges are not isolated—they are symptoms of execution not being designed as a system.

The execution problem

In today's environment, most organisations already have:

- A strategy
- Defined goals
- Ongoing initiatives

Yet results often fall short.

The challenge is not a lack of intent - it is a lack of structure.

Common symptoms include:

- Strategy does not translate into action
- Work is not organised for flow
- Prioritisation is inconsistent and unclear
- Investment decisions drift from strategy
- Initiatives compete rather than align
- Decision-making often becomes concentrated at the top, limiting speed and scalability

These are not isolated issues.

They are symptoms of the same root cause:

Execution is not designed as a coherent system

The solution: An operating system for execution

The WoW! Agile Toolbox is designed to close the gap between strategy and results.

The Toolbox complements existing strategy work by ensuring it translates into coordinated execution across the organisation.

It provides a **structured system** that connects:

- Direction (Vision & Strategy)
- Alignment (Target Steering)
- Structure (Value Streams)
- Decisions (VDR)



- Governance (Lean Portfolio Management)
- Enablement (QuickStart, Framework Flexibility, AI-ready organisation)

Each component addresses a specific aspect of execution.

Together, they form a coherent system that enables organisations to move from strategy to measurable outcomes—predictably and at speed.

How the system works

Execution is treated as a **connected flow**, not a set of disconnected activities.

- Strategy defines direction
- Objectives align the organisation
- Value streams organise work
- Decisions are made based on value
- Investments are governed and prioritised
- Execution is enabled and scaled

This ensures that:

- All parts of the organisation move in the same direction
 - Decisions are consistent and transparent
 - Delivery is focused on outcomes—not activity
-

The Toolbox components

Vision & Strategy

What it enables

- A clear and shared understanding of strategic direction
- Translation of vision into concrete objectives and deliverables
- Alignment across leadership and teams
- A strong foundation for execution

What problem it solves

Strategies are often unclear or not translated into actionable direction, leading to misalignment and slow execution.

When to use it

When there is a need to clarify strategic direction, align leadership, or establish a clear starting point for execution.



Target Steering

What it enables

- Alignment between strategy, objectives, and daily work
- A shared language across the organisation
- Clear objectives and measurable progress
- Reduced waste and improved focus

What problem it solves

Organisations struggle to align objectives across different levels, resulting in fragmented efforts and unclear priorities.

When to use it

When there is a need to align teams and initiatives with strategic objectives and ensure consistent direction across the organisation.

Value Streams

What it enables

- Organisation of work around value delivery
- Increased transparency and flow
- Improved cross-functional collaboration
- Faster time-to-market and reduced waste

What problem it solves

Work is often organised around functions rather than value, leading to inefficiencies, delays, and lack of customer focus.

When to use it

When there is a need to improve flow, reduce handovers, and align delivery with customer value.

Value-driven Requirements & Delivery (VDR)

What it enables

- A transparent, value-driven model for prioritising initiatives
- Clear trade-offs between competing opportunities



- Faster, more distributed decision-making
- Reduced dependency on individual decision-makers

What problem it solves

Prioritisation is often inconsistent and informal, leading to competing initiatives, unclear trade-offs, and heavy reliance on central decision-makers.

When to use it

When prioritisation is unclear, decisions are escalated unnecessarily, or leadership becomes a bottleneck for progress.

Lean Portfolio Management (LPM)

What it enables

- Alignment between investments and strategic priorities
- Improved governance and transparency
- Better resource utilisation
- More flexible and responsive financial planning

What problem it solves

Investment decisions are often disconnected from strategy, resulting in inefficient funding and lack of transparency.

When to use it

When there is a need to improve governance, align funding with value delivery, and ensure that investments support strategic objectives.

QuickStart

What it enables

- Rapid start of execution capability
- Immediate, practical results in real work contexts
- Learning by doing, not by theory
- A scalable foundation for broader transformation

What problem it solves

Transformations often take too long to deliver results, creating uncertainty and loss of momentum.



When to use it

When there is a need to start quickly, demonstrate value early, and build momentum for further change.

Framework Flexibility

What it enables

- A way of working tailored to the organisation
- Flexibility to combine or adapt frameworks
- Focus on outcomes rather than methodology
- Reduced dependency on any single framework

This ensures that teams use what works in practice—rather than what is imposed—leading to higher adoption and faster results.

What problem it solves

Organisations often become locked into frameworks that do not fit their context, creating unnecessary complexity.

When to use it

When existing frameworks create complexity or when there is a need to design a way of working suited to the organisation's context.

AI-ready organisation

What it enables

- Clear prioritisation and execution of high-impact AI and digital initiatives
- Alignment between AI initiatives and business strategy
- Integration of AI into existing workflows and decision-making
- Faster continuous learning loops with measurable outcomes

What problem it solves

AI is often adopted in a fragmented way, with teams experimenting independently but without alignment, prioritisation, or clear business impact. By creating fast decision-making, clear ownership and continuous learning loops, the Toolbox establishes the organisational conditions required to realise value from AI initiatives.



When to use it

When AI is already being used across the organisation but lacks coordination, direction, or measurable impact.

Typical implementation approach

The WoW! Agile Toolbox is designed to deliver results quickly and predictably.

Most organisations start with QuickStart to rapidly establish execution capability and demonstrate results.

This is then complemented with Vision & Strategy and Target Steering to ensure alignment and scalability.

This creates:

- Clear direction
- Aligned objectives
- Immediate execution capability

From there, additional components are introduced as needed to strengthen structure, decision-making, and governance.

Implementation is:

- Workshop-based
 - Focused on real work
 - Designed to deliver results within weeks—not months
-

Why leaders choose the WoW! Agile Toolbox

- It adapts to your business—not the other way around
 - It connects strategy to day-to-day execution
 - It focuses on outcomes, not methods
 - It delivers measurable results quickly
 - It scales from targeted initiatives to enterprise-wide transformation
-

What this could look like in practice

Within a few weeks, organisations typically achieve:

- A clear and shared direction across leadership



- Aligned priorities across teams
 - Faster, more distributed decision-making
 - A structured approach to AI and innovation
-

Next step

The WoW! Agile Toolbox is designed to be applied in your specific context.

The next step is a focused session to identify where execution breaks down today and define a clear starting point for delivering measurable results within weeks.
